

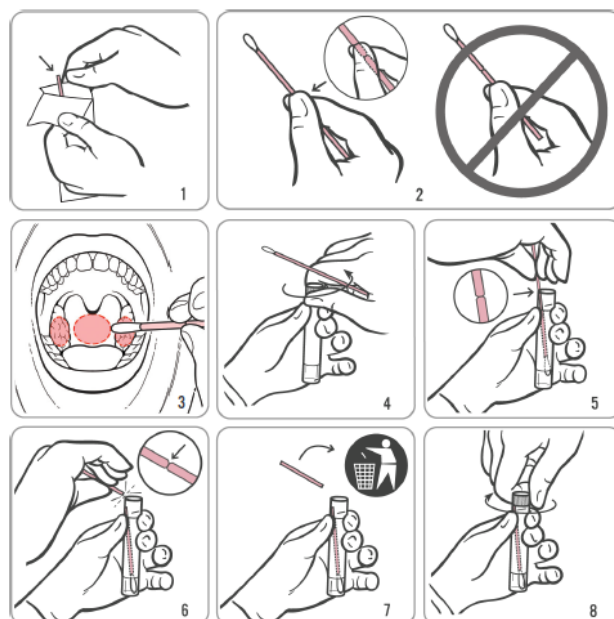
12.6.2023

Throat sample for Chlamydia and gonorrhoea test using Aptima Multitest Swab Specimen Collection Kit

- The collection kit contains a swab and a sample transportation tube.
- Handle the sample transportation tube with care as the liquid in it irritates the skin. In case of skin contact, wash the skin immediately with water and soap. In case of eye contact, flush the eyes with plenty of water and contact the health care centre.
- Do not moisten the swab with the transportation liquid or other liquid before sampling.

Sampling

- Wash your hands before sampling. Open the Aptima Multitest Swab Specimen Collection Kit.
- Remove the swab from its protective package. Hold the swab with thumb-index finger grip around the black mark. Do not touch the cotton head of the swab and do not let the swab out of your hand.
- Roll the cotton head of the swab against both tonsils (if you have them) and the back of the pharynx.
- Remove the swab from your mouth without touching your tongue or insides of your cheeks with it. Keep on holding the swab and be careful not to touch anything with it.
- Use your other hand to open the cap of the sample transportation tube. Do not break the folio part of the cap. Make sure the transportation liquid does not spill.
- Insert the swab into the sample transportation tube. Make sure the swab's black line is level with the top of the tube.
- Cut the swab's lower part by pressing it against the edge of the sample tube. The lower part of the swab drops into the transportation liquid. The end of the swab remaining in your hand can be disposed with waste.
- Make sure that the swab remains in the transportation tube. **If the swab is not in the tube, the sample cannot be analysed.**
- Screw the cap of the sample transportation tube shut tightly to prevent the sample from leaking during transportation.
- The sample can be preserved in room temperature.



Let the person collecting the sample know if you were not able to follow these instructions or if you were given other kind of instructions.

You medical care physician or nurse will answer inquiries concerning testing and test results. The laboratory will answer questions related to sampling procedure.